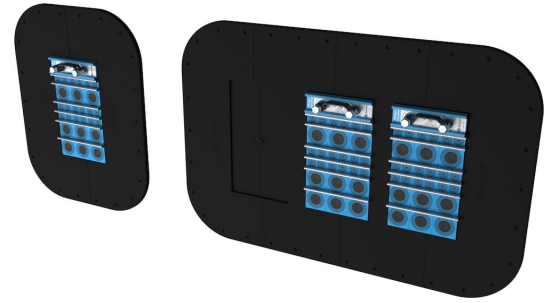




# Roxtec FlamePlus™ transit

Lightweight transit with built-in knock-out functionality

The Roxtec FlamePlus™ is a multi-cable transit for bolting onto different structures. The frame modularity simplifies handling and logistics and lightweight design makes it ideal for sandwich panels while the wide flange provides clearance between bolts and frame aperture to minimize the risk of cracks when bolted to concrete or brick walls. The built in knock-out plate provides ingress protection during and after the construction phase. The sealing modules adapt to cables of different sizes and can be used to create spare capacity.



- Light-weight
- Tightness during building phase
- Openable
- Modular design

## Product characteristics



Fire rated



IP/UL NEMA

## Structure of installation



Sandwich panel



Concrete

## Mounting type



Bolting

## Ratings & certificates

### Fire

- E/EI rating according to EN 13501

### Tightness

- IP 66

## Frame dimensions

### in/lbs

The frame variants below are a limited selection. For the full range of frames and configurations, please visit [roxtec.com](https://www.roxtec.com).

Product	Frame openings	Packing space	External dimensions WxHxD	Aperture dimensions w x h	Weight	Art. no
FLAMEPLUS 6x3 WITH EXT. FRAME	3	4.724 x 7.087	25.276 x 17.047 x 12.205		25.1	223807
FLAMEPLUS 6x2 WITH EXT. FRAME	2	4.724 x 7.087	19.173 x 17.047 x 12.205	13.819 x 11.693	18.5	223806
FLAMEPLUS 6x1 WITH EXT. FRAME	1	4.724 x 7.087	13.031 x 17.047 x 12.205		12.3	223805
FLAMEPLUS 6x1	1	4.724 x 7.087	13.071 x 17.047 x 2.638	7.717 x 11.693	5.8	213303
FLAMEPLUS 6x2	2	4.724 x 7.087	19.173 x 17.047 x 2.638	13.819 x 11.693	11	213321
FLAMEPLUS 6x3	3	4.724 x 7.087	25.315 x 17.047 x 2.638	19.961 x 11.693	14.1	213322
FLAMEPLUS 6x4	4	4.724 x 7.087	31.417 x 17.047 x 2.638	26.063 x 11.693	17.2	235413

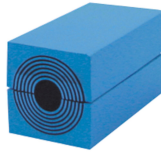


# Sealing components

## Sealing components



Lubricant



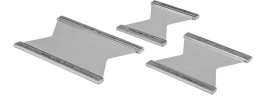
RM module with Multidiameter™



Sealing kit



Wedge & Wedgekit



Stayplate

For detailed information, please visit [roxtec.com](https://www.roxtec.com).

The product information provided by Roxtec does not release the purchaser of the Roxtec system, or part thereof, from the obligation to independently determine the suitability of the products for the intended process, installation and/or use.

Roxtec gives no guarantee for the Roxtec system or any part thereof and assumes no liability for any loss or damage whatsoever, whether direct, indirect, consequential, loss of profit or otherwise, occurred or caused by the Roxtec systems or installations containing components not manufactured by an authorized manufacturer and/or occurred or caused by the use of the Roxtec system in a manner or for an application other than for which the Roxtec system was designed or intended.

Roxtec expressly excludes any implied warranties of merchantability and fitness for a particular purpose and all other express or implied representations and warranties provided by statute or common law. User determines suitability of the Roxtec system for intended use and assumes all risk and liability in connection therewith. In no event shall Roxtec be liable for indirect, consequential, punitive, special, exemplary or incidental damages or losses.

The Roxtec products are offered and sold in accordance with the conditions of the Roxtec General Terms of Sales. The latest version of the Roxtec General Terms of Sales can be downloaded from <https://www.roxtec.com/en/about-us/about-roxtec/general-terms-of-sales/>

We reserve the right to make changes to the product and technical information without further notice. Any errors in print or entry are no claims for indemnity. The content of this publication is the property of Roxtec International AB and is protected by copyright.

This document was generated on: 2024-05-18